

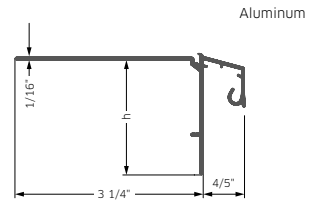
BLANKE BALCONY-GUTTER QUARTER CIRCLE TRIM

This balcony trim is designed to protect the edge of the tile installed over our underlayment, and to cover the edge of the exposed balcony/terrace substrate. The profile features an overhang extension deflecting water running off the tile installation from the balcony substrate. This extension can also hold additional components of the BLANKE BALCONY system including the gutter holder and gutter shield. Drainage holes allow for run-off of moisture collected by the drain mat system.



ALUMINUM 8.0		
GRAY, POWDER-COATED		
Length: 8.0 feet		Pack: 1 pc.
h/in.	Part no.	\$/pc.
1/16	430-4591-180	200.19

ALUMINUM 8.0		
STAINLESS STEEL METALLIC, POWDER-COATED		
Length: 8.0 feet		Pack: 1 pc.
h/in.	Part no.	\$/pc.
1/16	430-4502-180	206.19



JOINER

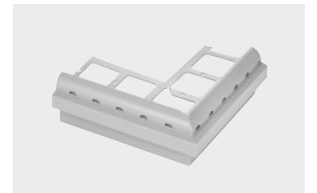
ALUMINUM		
GRAY, POWDER-COATED		
Width: 1 3/16"		Pack: 5 pcs.
h/in.	Part no.	\$/pack
1/16	432-4591-180	52.37

ALUMINUM		
STAINLESS STEEL METALLIC, POWDER-COATED		
Width: 1 3/16"		Pack: 5 pcs.
h/in.	Part no.	\$/pa
1/16	432-4502-180	53.96

OUTER CORNER JOINER 90°, OUTER DIMENSION 9 1/2" × 9 1/2"

ALUMINUM 90°		
GRAY, POWDER-COATED		
Pack: 1 pc.		
h/in.	Part no.	\$/pc.
3/4	433-4591-180090	99.93

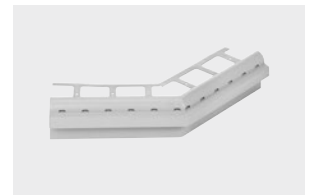
ALUMINUM 90°		
STAINLESS STEEL METALLIC, POWDER-COATED		
Pack: 1 pc.		
h/in.	Part no.	\$/pc.
3/4	433-4502-180090	102.93



OUTER CORNER JOINER 135°, OUTER DIMENSION 9 1/2" × 9 1/2"

ALUMINUM 135°		
GRAY, POWDER-COATED		
Pack: 1 pc.		
h/in.	Part no.	\$/pc.
3/4	433-4591-180135	117.51

ALUMINUM 135°		
STAINLESS STEEL METALLIC, POWDER-COATED		
Pack: 1 pc.		
h/in.	Part no.	\$/pc.
3/4	433-4502-180135	121.04



INNER CORNER JOINER 90°, OUTER DIMENSION 5 1/8" × 5 1/8"

ALUMINUM 90°		
GRAY, POWDER-COATED		
Pack: 1 pc.		
h/in.	Part no.	\$/pc.
3/4	649-4591-180090	117.51

ALUMINUM 90°		
STAINLESS STEEL METALLIC, POWDER-COATED		
Pack: 1 pc.		
h/in.	Part no.	\$/pc.
3/4	649-4502-180090	121.04

