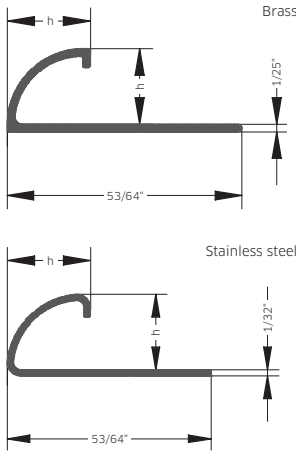




## BLANKE QUARTER CIRCLE TILE TRIM

BLANKE QUARTER CIRCLE TILE TRIMS provide a decorative finish and edge protection for wall and countertop tiled edges. The brass and stainless steel BLANKE QUARTER CIRCLE form a symmetrical, curved edge and can also be used as stair nose and transition trims.



### BLANKE QUARTER CIRCLE TILE TRIM

#### BRASS NATURAL 8.0

Length: 8.0 feet Pack: 5 pcs.

h/in.	Part no.	\$/pc.
¼	347-300-06025	61.77
⅜	347-300-08025	73.26
½	347-300-10025	86.11
⅝	347-300-12525	106.21
⅞	347-300-15025	130.66

### BLANKE QUARTER CIRCLE TILE TRIM, OUTER CORNERS

### BLANKE QUARTER CIRCLE TILE TRIM, INNER CORNERS

#### BRASS CHROME-PLATED 8.0

Length: 8.0 feet Pack: 1 pc.

h/in.	Part no.	\$/pc.
¼	347-340-06025	101.96
⅜	347-340-08025	113.45
½	347-340-10025	126.30
⅝	347-340-12525	149.26
⅞	347-340-15025	173.72

#### BRASS LOOK CHROME-PLATED

Pack: 1 pc.

h/in.	Part no.	\$/pc.
¼	348-940-060	7.28
⅜	348-940-080	7.28
½	348-940-100	7.28
⅝	348-940-125	7.28

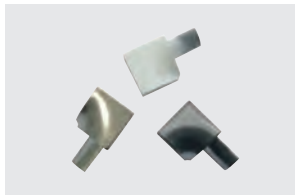
#### BRASS LOOK CHROME-PLATED

Pack: 1 pc.

h/in.	Part no.	\$/pc.
¼	349-940-060	7.28
⅜	349-940-080	7.28
½	349-940-100	7.28
⅝	349-940-125	7.28

**Expert's tip:**

When ordering the BLANKE QUARTER CIRCLE TILE TRIM please do not forget the inner and outer corners!



#### STAINLESS STEEL NATURAL 8.0

Length: 8.0 feet Pack: 5 pcs.

h/in.	Part no.	\$/pc.
¼	347-280-06025	48.50
⅜	347-280-08025	54.96
½	347-280-10025	59.04
⅝	347-280-11025	60.14
⅞	347-280-12525	60.89
1	347-280-15025	76.16

#### STAINLESS STEEL NATURAL

Pack: 1 pc.

h/in.	Part no.	\$/pc.
¼	348-280-060	11.15
⅜	348-280-080	11.63
½	348-280-100	13.42
⅝	348-280-110	16.81
⅞	348-280-125	17.91
1	348-280-150	21.98

#### STAINLESS STEEL NATURAL

Pack: 1 pc.

h/in.	Part no.	\$/pc.
¼	349-280-060	11.96
⅜	349-280-080	11.96
½	349-280-100	11.96
⅝	349-280-110	11.96
⅞	349-280-125	11.96

**Important note:**

For orders of 50 items or more Blanke offers delivery in a display carton.



#### STAINLESS STEEL LOOK NATURAL

Pack: 1 pc.

h/in.	Part no.	\$/pc.
¼	348-9280-060	7.28
⅜	348-9280-080	7.28
½	348-9280-100	7.28
⅝	348-9280-110	7.28
⅞	348-9280-125	7.28

#### STAINLESS STEEL LOOK NATURAL

Pack: 1 pc.

h/in.	Part no.	\$/pc.
¼	349-9280-060	7.28
⅜	349-9280-080	7.28
½	349-9280-100	7.28
⅝	349-9280-110	7.28
⅞	349-9280-125	7.28

## BLANKE QUARTER CIRCLE TILE TRIM

### STAINLESS STEEL 8.0 BRUSHED

Length: 8.0 feet Pack: 5 pcs.

h/in.	Part no.	\$/pc.
¼	347-280-06025B	60.87
⅜	347-280-08025B	69.17
½	347-280-10025B	76.00
⅝	347-280-11025B	76.33
¾	347-280-12525B	76.75

## BLANKE QUARTER CIRCLE TILE TRIM, OUTER CORNERS

### STAINLESS STEEL BRUSHED

Pack: 1 pc.

h/in.	Part no.	\$/pc.
¼	348-280B-060	14.31
⅜	348-280B-080	15.23
½	348-280B-100	16.10
⅝	348-280B-110	19.23
¾	348-280B-125	22.37

## BLANKE QUARTER CIRCLE TILE TRIM, INNER CORNERS

### STAINLESS STEEL BRUSHED

Pack: 1 pc.

h/in.	Part no.	\$/pc.
¼	349-280B-060	13.15
⅜	349-280B-080	13.15
½	349-280B-100	13.15
⅝	349-280B-110	13.15
¾	349-280B-125	13.15

#### Important note:

For orders of 50 items or more Blanke offers delivery in a display carton.



### STAINLESS STEEL LOOK BRUSHED

Pack: 1 pc.

h/in.	Part no.	\$/pc.
¼	348-928B-060	7.28
⅜	348-928B-080	7.28
½	348-928B-100	7.28
⅝	348-928B-110	7.28
¾	348-928B-125	7.28

### STAINLESS STEEL LOOK BRUSHED

Pack: 1 pc.

h/in.	Part no.	\$/pc.
¼	349-928B-060	7.28
⅜	349-928B-080	7.28
½	349-928B-100	7.28
⅝	349-928B-110	7.28
¾	349-928B-125	7.28

### STAINLESS STEEL 8.0 POLISHED

Length: 8.0 feet Pack: 5 pcs.

h/in.	Part no.	\$/pc.
¼	347-286-06025	70.39
⅜	347-286-08025	77.23
½	347-286-10025	84.23
⅝	347-286-11025	87.01
¾	347-286-12525	91.07
⅞	347-286-15025	98.50

### STAINLESS STEEL POLISHED

Pack: 1 pc.

h/in.	Part no.	\$/pc.
¼	348-286-060	14.31
⅜	348-286-080	15.23
½	348-286-100	16.10
⅝	348-286-110	19.23
¾	348-286-125	22.37

### STAINLESS STEEL POLISHED

Pack: 1 pc.

h/in.	Part no.	\$/pc.
¼	349-286-060	13.15
⅜	349-286-080	13.15
½	349-286-100	13.15
⅝	349-286-110	13.15
¾	349-286-125	13.15

### STAINLESS STEEL LOOK POLISHED

Pack: 1 pc.

h/in.	Part no.	\$/pc.
¼	348-9286-060	7.28
⅜	348-9286-080	7.28
½	348-9286-100	7.28
⅝	348-9286-110	7.28
¾	348-9286-125	7.28

### STAINLESS STEEL LOOK POLISHED

Pack: 1 pc.

h/in.	Part no.	\$/pc.
¼	349-9286-060	7.28
⅜	349-9286-080	7.28
½	349-9286-100	7.28
⅝	349-9286-110	7.28
¾	349-9286-125	7.28

## BLANKE QUARTER CIRCLE TILE TRIM, FLAT CAP

### STAINLESS STEEL NATURAL

Pack: 1 pc.

h/in.	Part no.	\$/pc.
¼	350-280-060	20.85
⅜	350-280-080	22.54
½	350-280-100	23.33
⅝	350-280-110	23.84
¾	350-280-125	24.23
⅞	350-280-150	25.16

### STAINLESS STEEL POLISHED

Pack: 1 pc.

h/in.	Part no.	\$/pc.
¼	350-286-060	27.99
⅜	350-286-080	29.67
½	350-286-100	30.45
⅝	350-286-110	30.98
¾	350-286-125	31.35

### STAINLESS STEEL BRUSHED

Pack: 1 pc.

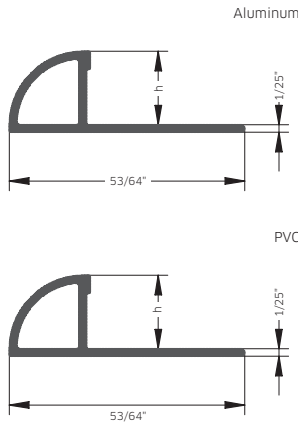
h/in.	Part no.	\$/pc.
¼	350-280B-060	27.99
⅜	350-280B-080	29.67
½	350-280B-100	30.45
⅝	350-280B-110	30.98
¾	350-280B-125	31.35





## BLANKE QUARTER CIRCLE TILE TRIM

BLANKE QUARTER CIRCLE TRIMS are made of high-quality aluminum or PVC and bring decorative finishes and edge protection to tiled edges. The vertical joint spacer of BLANKE QUARTER CIRCLE TILE TRIM provides superior structural strength and easy tile alignment. The variety of finishes available allows for ease in color coordination and creating decorative designs.



### BLANKE QUARTER CIRCLE TILE TRIM

ALUMINUM		8.0
SATIN SILVER, ANODIZED		
Length: 8.0 feet		Pack: 5 pcs.
h/in.	Part no.	\$/pc.
¼	347-410-06025	17.53
⅓	347-410-08025	20.04
½	347-410-10025	22.53
⅔	347-410-11025	23.87
¾	347-410-12525	26.90

### BLANKE QUARTER CIRCLE TILE TRIM, OUTER CORNERS

ALUMINUM		
SATIN SILVER, ANODIZED		
Length: 8.0 feet		Pack: 1 pc.
h/in.	Part no.	\$/pc.
¼	348-410AL-060	12.60
⅓	348-410AL-080	12.60
½	348-410AL-100	12.60
⅔	348-410AL-110	12.60
¾	348-410AL-125	12.60

### BLANKE QUARTER CIRCLE TILE TRIM, INNER CORNERS

ALUMINUM		
SATIN SILVER, ANODIZED		
Length: 8.0 feet		Pack: 1 pc.
h/in.	Part no.	\$/pc.
¼	349-410AL-060	16.94
⅓	349-410AL-080	16.94
½	349-410AL-100	16.94
⅔	349-410AL-110	16.94
¾	349-410AL-125	16.94

### ALUMINUM LOOK SATIN SILVER

ALUMINUM LOOK		
SATIN SILVER		
Length: 8.0 feet		Pack: 1 pc.
h/in.	Part no.	\$/pc.
¼	348-410-060	7.28
⅓	348-410-080	7.28
½	348-410-100	7.28
⅔	348-410-110	7.28
¾	348-410-125	7.28

### ALUMINUM LOOK SATIN SILVER

ALUMINUM LOOK		
SATIN SILVER		
Length: 8.0 feet		Pack: 1 pc.
h/in.	Part no.	\$/pc.
¼	349-410-060	7.28
⅓	349-410-080	7.28
½	349-410-100	7.28
⅔	349-410-110	7.28
¾	349-410-125	7.28

**Advantages:**

- > High quality
- > Structural support provided by an integrated vertical support piece under the curved profile (Extruded aluminum and PVC)
- > Superior weather resistance due to the durable baked-on plastic coating

**Expert's tip:**

When ordering the BLANKE QUARTER CIRCLE TILE TRIM please do not forget the inner and outer corners!



### ALUMINUM SHINY SILVER, ANODIZED

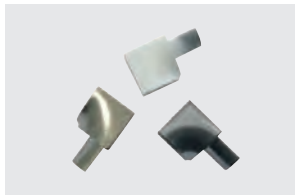
ALUMINUM		8.0
SHINY SILVER, ANODIZED		
Length: 8.0 feet		Pack: 5 pcs.
h/in.	Part no.	\$/pc.
¼	347-430-06025	20.72
⅓	347-430-08025	23.19
½	347-430-10025	26.15
⅔	347-430-11025	27.38
¾	347-430-12525	29.59

### ALUMINUM LOOK SHINY SILVER

ALUMINUM LOOK		
SHINY SILVER		
Length: 8.0 feet		Pack: 1 pc.
h/in.	Part no.	\$/pc.
¼	348-930-060	7.28
⅓	348-930-080	7.28
½	348-930-100	7.28
⅔	348-930-110	7.28
¾	348-930-125	7.28

### ALUMINUM LOOK SHINY SILVER

ALUMINUM LOOK		
SHINY SILVER		
Length: 8.0 feet		Pack: 1 pc.
h/in.	Part no.	\$/pc.
¼	349-930-060	7.28
⅓	349-930-080	7.28
½	349-930-100	7.28
⅔	349-930-110	7.28
¾	349-930-125	7.28



### ALUMINUM STAINLESS STEEL METALLIC, POWDER-COATED

ALUMINUM		8.0
STAINLESS STEEL METALLIC, POWDER-COATED		
Length: 8.0 feet		Pack: 5 pcs.
h/in.	Part no.	\$/pc.
¼	347-4502-06025	19.37
⅓	347-4502-08025	21.94
½	347-4502-10025	24.58
⅔	347-4502-11025	25.64
¾	347-4502-12525	27.97

### ALUMINUM LOOK STAINLESS STEEL METALLIC, POWDER-COATED

ALUMINUM LOOK		
STAINLESS STEEL METALLIC, POWDER-COATED		
Length: 8.0 feet		Pack: 1 pc.
h/in.	Part no.	\$/pc.
¼	348-9502-060	7.72
⅓	348-9502-080	7.72
½	348-9502-100	7.72
⅔	348-9502-110	7.72
¾	348-9502-125	7.72

### ALUMINUM LOOK STAINLESS STEEL METALLIC, POWDER-COATED

ALUMINUM LOOK		
STAINLESS STEEL METALLIC, POWDER-COATED		
Length: 8.0 feet		Pack: 1 pc.
h/in.	Part no.	\$/pc.
¼	349-9502-060	7.72
⅓	349-9502-080	7.72
½	349-9502-100	7.72
⅔	349-9502-110	7.72
¾	349-9502-125	7.72

## BLANKE QUARTER CIRCLE TILE TRIM

### ALUMINUM 8.0 SATIN GOLD, ANODIZED

Length: 8.0 feet Pack: 5 pcs.

h/in.	Part no.	\$/pc.
¼	347-420-06025	18.18
⅜	347-420-08025	20.71
½	347-420-10025	23.20
¾	347-420-12525	26.90

### ALUMINUM 8.0 SHINY GOLD, ANODIZED

Length: 8.0 feet Pack: 5 pcs.

h/in.	Part no.	\$/pc.
¼	347-480-06025	20.43
⅜	347-480-08025	23.07
½	347-480-10025	25.70
¾	347-480-12525	29.65

### ALUMINUM 8.0 JASMINE, POWDER-COATED

Length: 8.0 feet Pack: 5 pcs.

h/in.	Part no.	\$/pc.
¼	347-4501-06025	18.85
⅜	347-4501-08025	20.04
½	347-4501-10025	21.88
¾	347-4501-12525	23.84

### ALUMINUM 8.0 WHITE, POWDER-COATED

Length: 8.0 feet Pack: 5 pcs.

h/in.	Part no.	\$/pc.
¼	347-450-06025	18.85
⅜	347-450-08025	20.04
½	347-450-10025	21.88
¾	347-450-11025	23.29
1	347-450-12525	23.84

### ALUMINUM 8.0 MANHATTAN GRAY, POWDER-COATED

Length: 8.0 feet Pack: 5 pcs.

h/in.	Part no.	\$/pc.
¼	347-4591-06025	18.85
⅜	347-4591-08025	20.04
½	347-4591-10025	21.88
¾	347-4591-12525	23.84

### ALUMINUM 8.0 GRAPHITE BLACK, POWDER-COATED

Length: 8.0 feet Pack: 5 pcs.

h/in.	Part no.	\$/pc.
¼	347-456-06025	18.85
⅜	347-456-08025	20.04
½	347-456-10025	21.88
¾	347-456-12525	23.84

## BLANKE QUARTER CIRCLE TILE TRIM, OUTER CORNERS

### ALUMINUM LOOK SATIN GOLD

Pack: 1 pc.

h/in.	Part no.	\$/pc.
¼	348-920-060	7.28
⅜	348-920-080	7.28
½	348-920-100	7.28
¾	348-920-125	7.28

### ALUMINUM LOOK SHINY GOLD

Pack: 1 pc.

h/in.	Part no.	\$/pc.
¼	348-980-060	7.28
⅜	348-980-080	7.28
½	348-980-100	7.28
¾	348-980-125	7.28

### ALUMINUM LOOK JASMINE, POWDER-COATED

Pack: 1 pc.

h/in.	Part no.	\$/pc.
¼	348-9501-060	7.28
⅜	348-9501-080	7.28
½	348-9501-100	7.28
¾	348-9501-125	7.28

### ALUMINUM LOOK WHITE, POWDER-COATED

Pack: 1 pc.

h/in.	Part no.	\$/pc.
¼	348-950-060	7.28
⅜	348-950-080	7.28
½	348-950-100	7.28
¾	348-950-110	7.28
1	348-950-125	7.28

### ALUMINUM LOOK MANHATTAN GRAY, POWDER-COATED

Pack: 1 pc.

h/in.	Part no.	\$/pc.
¼	348-9591-060	7.28
⅜	348-9591-080	7.28
½	348-9591-100	7.28
¾	348-9591-125	7.28

### ALUMINUM LOOK GRAPHITE BLACK, POWDER-COATED

Pack: 1 pc.

h/in.	Part no.	\$/pc.
¼	348-956-060	5.47
⅜	348-956-080	5.47
½	348-956-100	5.47
¾	348-956-125	5.47

## BLANKE QUARTER CIRCLE TILE TRIM, INNER CORNERS

### ALUMINUM LOOK SATIN GOLD

Pack: 1 pc.

h/in.	Part no.	\$/pc.
¼	349-920-060	7.28
⅜	349-920-080	7.28
½	349-920-100	7.28
¾	349-920-125	7.28

### ALUMINUM LOOK SHINY GOLD

Pack: 1 pc.

h/in.	Part no.	\$/pc.
¼	349-980-060	7.28
⅜	349-980-080	7.28
½	349-980-100	7.28
¾	349-980-125	7.28

### ALUMINUM LOOK JASMINE, POWDER-COATED

Pack: 1 pc.

h/in.	Part no.	\$/pc.
¼	349-9501-060	7.28
⅜	349-9501-080	7.28
½	349-9501-100	7.28
¾	349-9501-125	7.28

### ALUMINUM LOOK WHITE, POWDER-COATED

Pack: 1 pc.

h/in.	Part no.	\$/pc.
¼	349-950-060	7.28
⅜	349-950-080	7.28
½	349-950-100	7.28
¾	349-950-110	7.28
1	349-950-125	7.28

### ALUMINUM LOOK MANHATTAN GRAY, POWDER-COATED

Pack: 1 pc.

h/in.	Part no.	\$/pc.
¼	349-9591-060	7.28
⅜	349-9591-080	7.28
½	349-9591-100	7.28
¾	349-9591-125	7.28

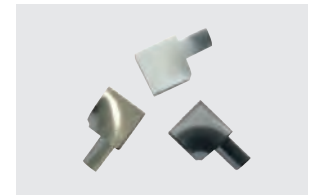
### ALUMINUM LOOK GRAPHITE BLACK, POWDER-COATED

Pack: 1 pc.

h/in.	Part no.	\$/pc.
¼	349-956-060	5.47
⅜	349-956-080	5.47
½	349-956-100	5.47
¾	349-956-125	5.47

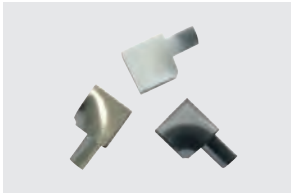
#### Expert's tip:

When ordering the BLANKE QUARTER CIRCLE TILE TRIM please do not forget the inner and outer corners!



**Expert's tip:**

When ordering the BLANKE QUARTER CIRCLE TILE TRIM please do not forget the inner and outer corners!



**BLANKE QUARTER CIRCLE TILE TRIM**

**ALUMINUM 8.0**  
ROYAL CHAMPAGNE, ANODIZED

Length: 8.0 feet Pack: 5 pcs.

h/in.	Part no.	\$/pc.
¼	347-470-06025	20.41
⅜	347-470-08025	23.09
½	347-470-10025	25.95
⅝	347-470-11025	27.37
¾	347-470-12525	29.41

**ALUMINUM 8.0**  
TITANIUM BRONZE, ANODIZED

Length: 8.0 feet Pack: 5 pcs.

h/in.	Part no.	\$/pc.
¼	347-446-06025	20.80
⅜	347-446-08025	23.09
½	347-446-10025	25.95
⅝	347-446-11025	27.37
¾	347-446-12525	29.41

**ALUMINUM 8.0**  
OIL RUBBED BRONZE, ANODIZED

Length: 8.0 feet Pack: 5 pcs.

h/in.	Part no.	\$/pc.
⅜	347-449-08025	26.51
½	347-449-10025	27.25
⅝	347-449-11025	28.30
¾	347-449-12525	30.83

**ALUMINUM 8.0**  
BRUSHED NICKEL, ANODIZED

Length: 8.0 feet Pack: 5 pcs.

h/in.	Part no.	\$/pc.
¼	347-420B-06025	23.63
⅜	347-420B-08025	25.30
½	347-420B-10025	27.77
⅝	347-420B-11025	28.34
¾	347-420B-12525	32.48

**PVC 8.0**  
WHITE

Length: 8.0 feet Pack: 5 pcs.

h/in.	Part no.	\$/pc.
¼	347-501-06025	7.65
⅜	347-501-08025	7.89
½	347-501-10025	8.30
⅝	347-501-11025	8.82
¾	347-501-12525	10.19

**BLANKE QUARTER CIRCLE TILE TRIM, OUTER CORNERS**

**ALUMINUM LOOK 8.0**  
ROYAL CHAMPAGNE

Pack: 1 pc.

h/in.	Part no.	\$/pc.
¼	348-470-060	7.28
⅜	348-470-080	7.28
½	348-470-100	7.28
⅝	348-470-110	7.28
¾	348-470-125	7.28

**ALUMINUM 8.0**  
TITANIUM BRONZE, ANODIZED

Pack: 1 pc.

h/in.	Part no.	\$/pc.
¼	348-446-060	12.20
⅜	348-446-080	12.20
½	348-446-100	12.20
⅝	348-446-110	12.20
¾	348-446-125	12.20

**ALUMINUM 8.0**  
OIL RUBBED BRONZE, ANODIZED

Pack: 1 pc.

h/in.	Part no.	\$/pc.
⅜	348-449-080	13.93
½	348-449-100	13.93
⅝	348-449-110	13.93
¾	348-449-125	13.93

**ALUMINUM LOOK 8.0**  
BRUSHED NICKEL

Pack: 1 pc.

h/in.	Part no.	\$/pc.
¼	348-420B-060	7.08
⅜	348-420B-080	7.08
½	348-420B-100	7.08
⅝	348-420B-110	7.08
¾	348-420B-125	7.08

**PVC 8.0**  
WHITE

Pack: 1 pc.

h/in.	Part no.	\$/pc.
¼	348-501-060	2.54
⅜	348-501-080	2.54
½	348-501-100	2.54
⅝	348-501-110	2.54
¾	348-501-125	2.54

**BLANKE QUARTER CIRCLE TILE TRIM, INNER CORNERS**

**ALUMINUM LOOK 8.0**  
ROYAL CHAMPAGNE

Pack: 1 pc.

h/in.	Part no.	\$/pc.
¼	349-470-060	7.28
⅜	349-470-080	7.28
½	349-470-100	7.28
⅝	349-470-110	7.28
¾	349-470-125	7.28

**ALUMINUM 8.0**  
TITANIUM BRONZE, ANODIZED

Pack: 1 pc.

h/in.	Part no.	\$/pc.
¼	349-446-060	12.20
⅜	349-446-080	12.20
½	349-446-100	12.20
⅝	349-446-110	12.20
¾	349-446-125	12.20

**ALUMINUM 8.0**  
OIL RUBBED BRONZE, ANODIZED

Pack: 1 pc.

h/in.	Part no.	\$/pc.
⅜	349-449-080	13.93
½	349-449-100	13.93
⅝	349-449-110	13.93
¾	349-449-125	13.93

**ALUMINUM LOOK 8.0**  
BRUSHED NICKEL

Pack: 1 pc.

h/in.	Part no.	\$/pc.
¼	349-420B-060	7.08
⅜	349-420B-080	7.08
½	349-420B-100	7.08
⅝	349-420B-110	7.08
¾	349-420B-125	7.08

**PVC 8.0**  
WHITE

Pack: 1 pc.

h/in.	Part no.	\$/pc.
¼	349-501-060	2.54
⅜	349-501-080	2.54
½	349-501-100	2.54
⅝	349-501-110	2.54
¾	349-501-125	2.54

**BLANKE QUARTER  
CIRCLE TILE TRIM**

**PVC  
JASMINE 8.0**

Length: 8.0 feet Pack: 5 pcs.

h/in.	Part no.	\$/pc.
¼	347-5011-06025	7.65
⅜	347-5011-08025	7.89
½	347-5011-10025	8.30
⅝	347-5011-11025	8.82
¾	347-5011-12525	10.19

**PVC  
MANHATTAN GRAY 8.0**

Length: 8.0 feet Pack: 5 pcs.

h/in.	Part no.	\$/pc.
¼	347-5091-06025	7.65
⅜	347-5091-08025	7.89
½	347-5091-10025	8.30
⅝	347-5091-11025	8.82
¾	347-5091-12525	10.19

**PVC  
SILVER GRAY 8.0**

Length: 8.0 feet Pack: 5 pcs.

h/in.	Part no.	\$/pc.
¼	347-5092-06025	7.65
⅜	347-5092-08025	7.89
½	347-5092-10025	8.30
⅝	347-5092-11025	8.82

**BLANKE QUARTER  
CIRCLE TILE TRIM,  
OUTER CORNERS**

**PVC  
JASMINE**

Pack: 1 pc.

h/in.	Part no.	\$/pc.
¼	348-5011-060	2.54
⅜	348-5011-080	2.54
½	348-5011-100	2.54
⅝	348-5011-110	2.54
¾	348-5011-125	2.54

**PVC  
MANHATTAN GRAY**

Pack: 1 pc.

h/in.	Part no.	\$/pc.
¼	348-5091-060	2.54
⅜	348-5091-080	2.54
½	348-5091-100	2.54
⅝	348-5091-110	2.54
¾	348-5091-125	2.54

**PVC  
SILVER GRAY**

Pack: 1 pc.

h/in.	Part no.	\$/pc.
¼	348-5092-060	2.54
⅜	348-5092-080	2.54
½	348-5092-100	2.54
⅝	348-5092-110	2.54

**BLANKE QUARTER  
CIRCLE TILE TRIM,  
INNER CORNERS**

**PVC  
JASMINE**

Pack: 1 pc.

h/in.	Part no.	\$/pc.
¼	349-5011-060	2.54
⅜	349-5011-080	2.54
½	349-5011-100	2.54
⅝	349-5011-110	2.54
¾	349-5011-125	2.54

**PVC  
MANHATTAN GRAY**

Pack: 1 pc.

h/in.	Part no.	\$/pc.
¼	349-5091-060	2.54
⅜	349-5091-080	2.54
½	349-5091-100	2.54
⅝	349-5091-110	2.54
¾	349-5091-125	2.54

**PVC  
SILVER GRAY**

Pack: 1 pc.

h/in.	Part no.	\$/pc.
¼	349-5092-060	2.54
⅜	349-5092-080	2.54
½	349-5092-100	2.54
⅝	349-5092-110	2.54

**Expert's tip:**

When ordering the BLANKE QUARTER CIRCLE TILE TRIM please do not forget the inner and outer corners!

