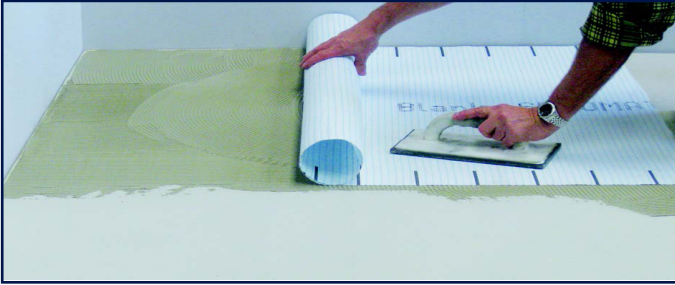


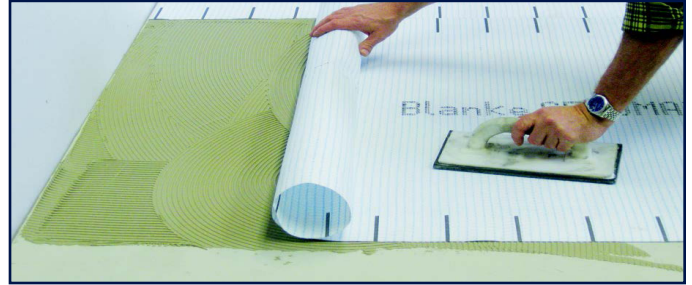


Blanke • SECUMAT

INSTALLATION INSTRUCTIONS



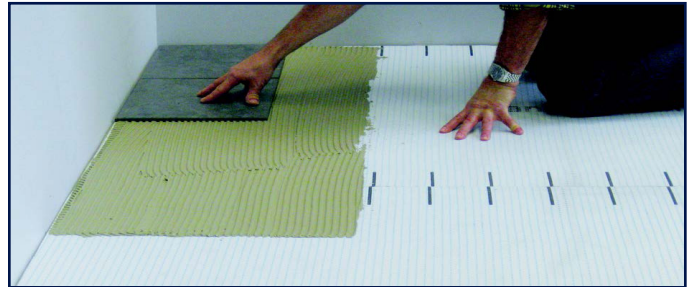
3. Using the flat side of the trowel, press the mat into the thinset ensuring that the mat is free of air pockets and crimps in the fabric. Start at one end and continue working in one direction to avoid air pockets.



4. Butt the edges of adjacent sections tightly together.



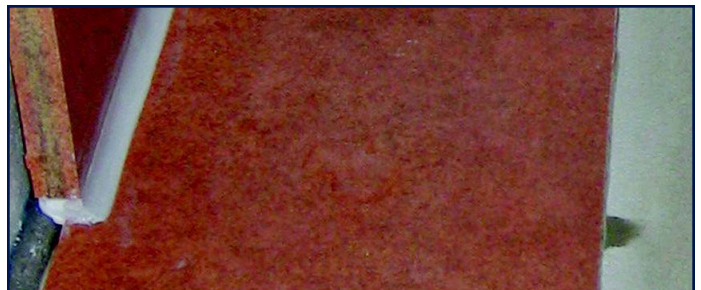
5. Cuts can be easily made using a knife or a scissors.



6. Allow the thinset to set-up until hard. Traffic on the III.(SECUMAT should be kept to a minimum while the thinset is curing. Apply latex modified thinset (mid-grade quality or higher) and install tile following the thinset manufacturer installation instructions and in accordance with industry practices in the same way as tile is in-stalled on backerboard and similar underlayments.



7. Grout the tile after allowing the curing period as recommended by the grout manufacturer. Follow the manufacturer installation instructions and industry practices when grouting.



8. The III.(SECUMAT does not eliminate the need for movement joints in the tile surface and at the perimeter of the installation (see EJ171-07). The III.(FLOOREX and III.(CORNEX are prefabricated movement joints specifically designed for this purpose.